

ASSURE RELIABILITY WITH TESTING**SITE AUDITS**

Assuring network reliability is crucial in today's competitive environment. BPS can provide comprehensive report of your facility's AC, DC, UPS, generator, and grounding systems. A site audit will enable you to fully assess your facility's condition, budget for future needs, evaluate maintenance practices, as well as identify potential problems before they result service interruptions.

- Audits Custom Tailored to Client's Request
- Written Report - Assessment of Facility's Condition, Equipment Inventory, Current / Future Growth Strategies, Recommendations

**CAPACITY TESTING**

At BPS, we believe the only true test of a battery system is a capacity test. BPS performs capacity testing per IEEE guidelines and provides temporary batteries to ensure your equipment remains protected throughout the process. Few companies can afford the cost and headaches of a system failure; make sure your battery is performing at rated capacity.

- Load Testing per IEEE Guidelines (including pre and post test evaluations)
- Temporary Batteries Protect your Equipment through Testing & Re-charge
- Written Report Documenting Performance & Recommendations

CONNECTION INTEGRITY TESTING

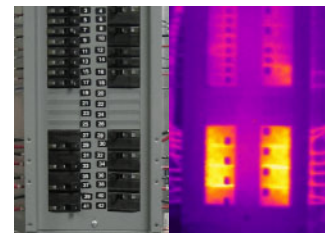
A leading cause of system failure and battery room fires is high connector resistance. A complete maintenance routine should include periodic resistance measurements of each battery cell connector. BPS can provide resistance testing as a part of a total periodic maintenance program or on an as needed basis.

INTERNAL RESISTANCE / CONDUCTANCE / IMPEDANCE

Ohmic measurements are becoming an increasing requirement of many comprehensive maintenance programs. The ability to compare data collected over time provides customers with the ability to identify potential problems before they result in system outages. BPS can perform Internal Ohmic measurements as a part of a comprehensive maintenance program or as a stand alone service.

INFRARED THERMOGRAPHY

System components such as fuses, breakers, and connections operating beyond their designed temperature range represent a significant risk to system integrity. Using infrared thermal imaging, BPS can easily determine if these components are operating within their design parameters. This non-intrusive testing can be performed either independently or as part of a complete site audit.

**GROUND RESISTANCE TESTING**

High ground resistance can result in such troublesome problems as intermittent equipment difficulties or as catastrophic as system failure, severe equipment damage and even personnel injury. Utilizing high resolution ground resistance test equipment, BPS personnel can evaluate your existing grounding system.

ALARM SET POINTS

Testing of alarm set points can be accomplished on most equipment without system interruption. Regular verification and testing of alarms is an essential part of system integrity and reliability.